

HD-SDI CAT5 Extender Series

ITEM NO.: SDI05A

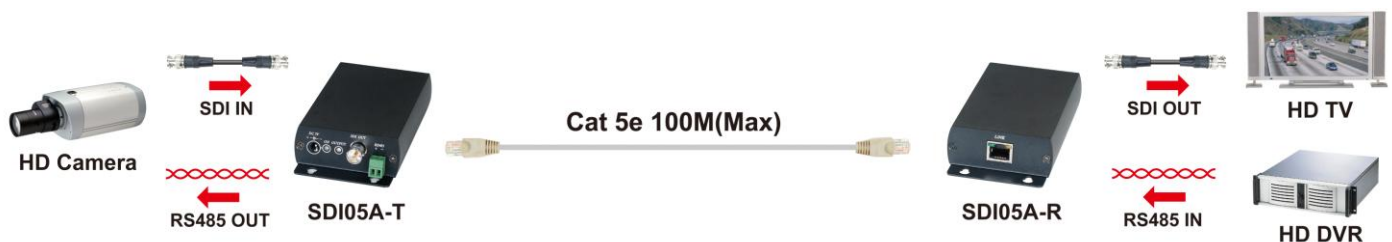


HD-SDI CAT5 Extender is a active devices which use CAT5e/CAT6 cable to send HD-SDI signals up to 100m. It is perfect to send HD CCTV over existing CAT5 cable Applications include HD-CCTV, broadcasting, HD camcorder, studio-to-studio, post production, live events, medical imaging displays, and medical imaging...etc.

SDI05A HD-SDI CAT5 Extender with Data

- To send HD/SD-SDI signal over CAT5e/6 UTP cable.
- Built in RS485 data.
- Support SDI (SMPTE 259M), HD-SDI (SMPTE 292M).
- Up to 100 meters via CAT5e/CAT6 cable at HD-SDI resolution.
- **Optional model: SR01 signal repeater for longer distance application.**
- Built in Equalizer to increase the working distance and signal reliability.

Installation View:



Optional Model: SR01 Signal Repeater (order separately)

- Extend data signal for an additional 120meters.
- Application for SDI05A signals for extra long range transmission.
- Ability to cascade connection with multiple SR01 for long range transmission
- Built in LED status indication.
- External power required.
- Plug and play for easy installation.

Work with SDI05A HD-SDI CAT5 Extender:



HD-SDI over Coax Cable :

HD-SDI Coax cable recommend to use high quality RG6U, 75Ω Coaxial Cable, low quality coaxial cable or BNC connector may cause signal loss and effect transmission distance and reliability.

Max. distance via high quality 75Ω Coaxial Cable (Belden 1694A RG6U Testing)	
HD resolution (1.45Gbps:720p,1080i,1080p@24/25/30Hz)	100M

HD-SDI over CAT5 Cable :

Video Link cable using high quality CAT5E UTP/STP/FTP or CAT6 UTP cable.
HD resolution (1.45Gbps:720p,1080i,1080p@24/25/30Hz): Max. distance 100M
To add model no: SR01 signal repeater for longer distance application.

Video Resolution:

SDI05AT Input	SDI05AR Output
576i@50Hz / 720p@50Hz	720p@50Hz
480i@60Hz / 720p@60Hz	720p@60Hz
1080p@24Hz	1080p@24Hz
1080i@50Hz / 1080p@25Hz	1080p@25Hz
1080i@60Hz / 1080p@30Hz	1080p@30Hz
1080p@50Hz	1080p@50Hz
1080p@60Hz	1080p@60Hz

SDI05AT LED Indication:

Green	On	Power on
Blue	On	SDI signal input

RJ45 LED Indication:

Green	On	Connection
Yellow	Flash	Data Transmission

SDI05AR LED Indication:

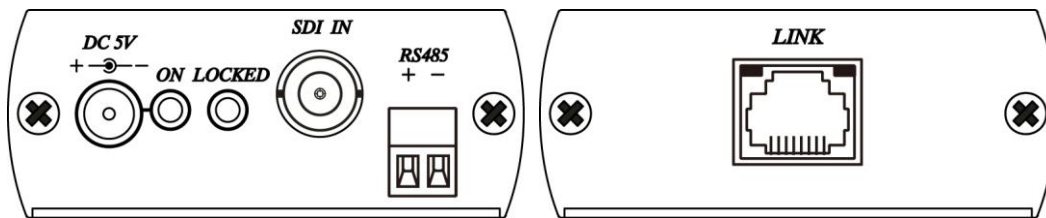
Green	On	Power on
Blue	On	SDI signal output

RJ45 LED Indication:

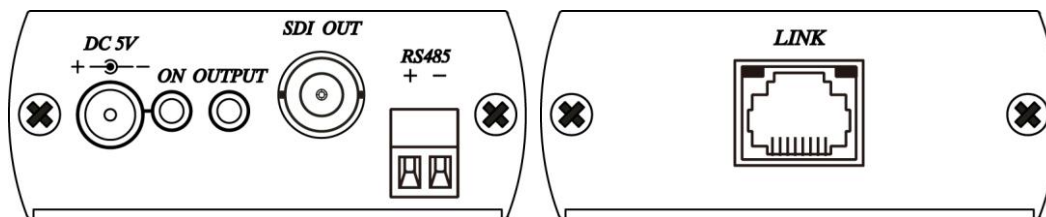
Green	On	Connection
Yellow	Flash	Data Transmission

Panel View:

SDI05AT



SDI05AR



RJ45 Define:

Link Cable (TIA/EIA-568-B)

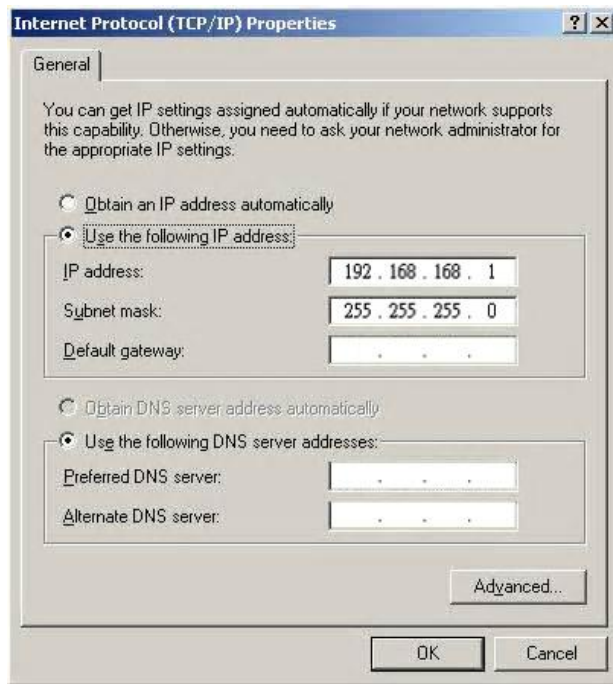
- | | |
|-----------------|----------|
| 1. Orange-white | Data 1 + |
| 2. Orange | Data 1 - |
| 3. Green-white | Data 2 + |
| 4. Blue | N/C |
| 5. Blue-white | N/C |
| 6. Green | Data 2 - |
| 7. Brown-white | N/C |
| 8. Brown | N/C |

RS485 Setting :

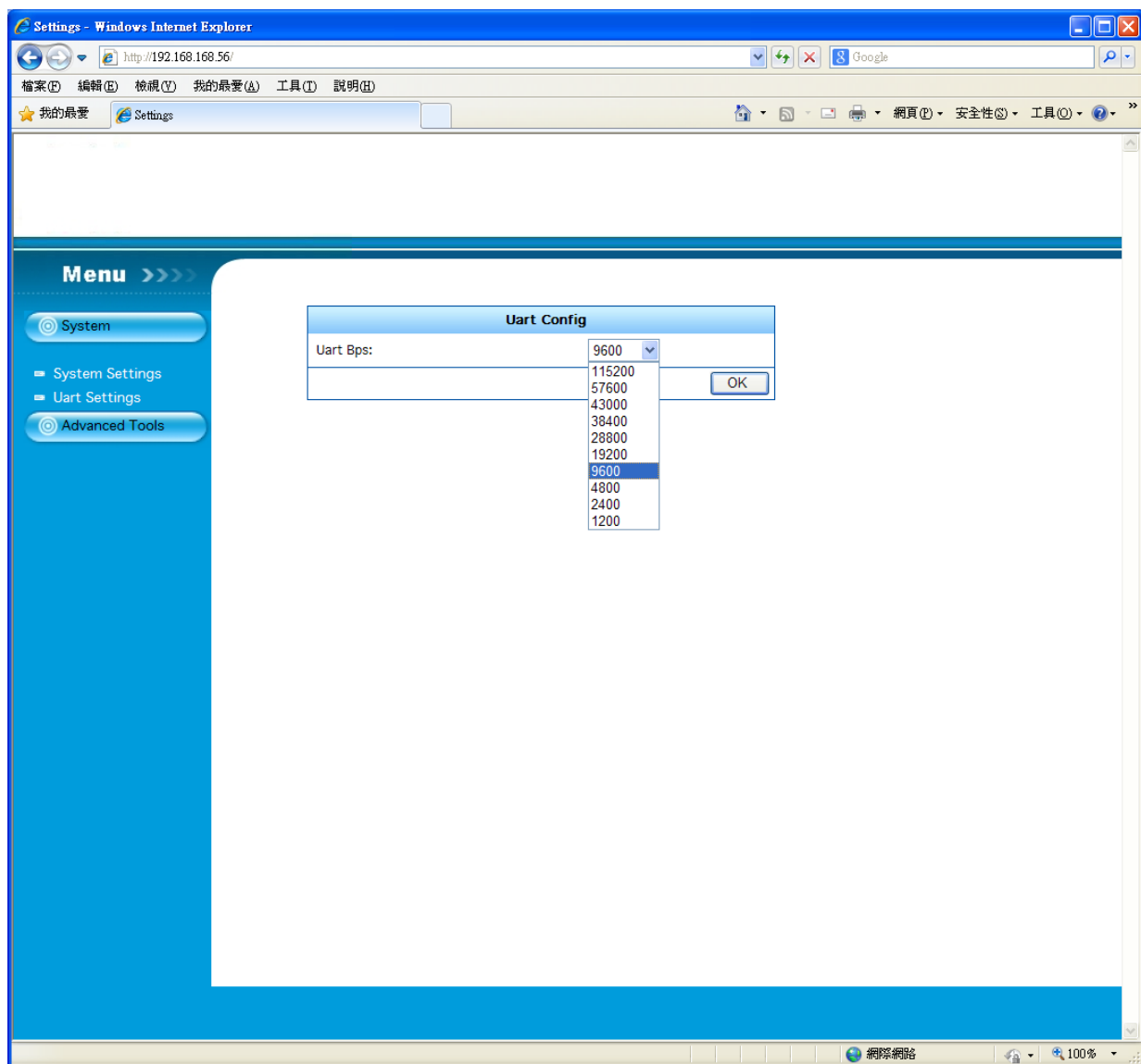
SDI05A RS485 is half duplex mode, the Data Baud Rate Default is 9600. If need to change the different data Baud rate, please go to webpage to change the setting.

The setting step as below:

1. Under PC internet link, change IP address to 192.168.168.1, change subnet mask to 255.255.255.0



2. After setting, put the IP as below
192.168.168.55 → SDI05AT Management webpage
192.168.168.56 → SDI05AR Management webpage
3. After login webpage select System→Uart Settings: to find the data rate you want to change, then press OK.



Caution:

The cabling must away from any equipment with electromagnetic wave, i.e.: microwave, radio equipment, high voltage.

Specification:

ITEM NO	SDI05AT	SDI05AR
Video Input / Output	BNC x 1 (75 Ω) MALE	
Support Resolution	SMPTE 259M - SD-SDI(270 Mbps) SMPTE 292M - HD-SDI(1.485 Gbps)	
Transmission Interface	RJ45 x 1	
RS485 Interface	Terminal x 1	
Transmission Distance	100 meters	
Power Supply	DC 5V 2 Amp	
Power Consumption	1200mA	
Temperature	Operation: 0 to 55°C, Storage: -20 TO 85°C, Humidity: up to 95%	
Dimensions mm	67 x 140 x 27	
Weight g	230	