

## EDID Emulator Series

### ITEM NO.: EE01H HDMI EDID Emulator

The EE01H HDMI EDID Emulator design for 1080P and 4K2K HDMI signal sources, enables you to capture and store EDID (Extended Display Identification Data) information when connected to a display.

EDID information contains important display settings such as maximum image size, color characteristics, factory pre-set timings, frequency range limits, etc., and since most video extender systems don't offer EDID communication between the source and remote display, the HDMI EDID Emulator is a perfect workaround for ensuring the optimum signal is provided to the display to help prolong the life of your displays.



### EE01H HDMI EDID Emulator

#### Features:

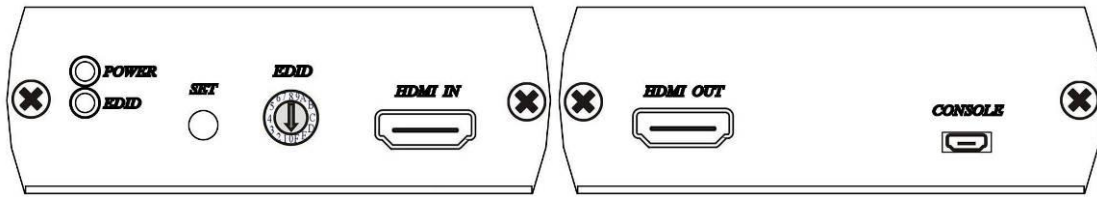
- Support 4 different EDID function: read, write, emulate, by pass
- Allows the source device to read the selected EDID information from the unit default or learned EDID memory.
- Built in rotary switch, support up to 12 sets default EDID setting
- Allow to save 3 sets custom EDID.
- Built in USB port to allow user to write EDID.
- Built in Equalizer for reliable signal quality performance.
- Support HDMI 1.4a
- HDCP compliant.
- Support 4K2K@30Hz and 3D capable.
- Resolution support up to 4K x 2K (3840 x 2160@24、25、30Hz or 4096 x 2160@24Hz)
- Console port for power input and EDID loading.

#### LED:

Green	ON	Power on
	OFF	Power off
Blue	ON	EDID error
	Slow Flash	Read/write EDID
	Quick Flash	Write EDID



## Panel View:



## EDID Rotary Switch:

- 0: By pass mode
- 1: Custom EDID #1
- 2: Custom EDID #2
- 3: Custom EDID #3
- 4: 720p@60Hz , LPCM 2 channel
- 5: 1080i@50Hz , LPCM 2 channel
- 6: 1080i@60Hz , LPCM 2 channel
- 7: 1080p@24Hz , LPCM 2 channel
- 8: 1080p@25Hz , LPCM 2 channel
- 9: 1080p@50Hz , LPCM 2 channel
- A: 1080p@60Hz , LPCM 2 channel
- B: 1080p@24 Hz , LPCM 5.1 channel
- C: 1080p@50 Hz , LPCM 5.1 channel
- D: 1080p@60 Hz , LPCM 5.1 channel
- E: 1080p@60 Hz , LPCM 7.1 channel
- F: 3840 x 2160@30 Hz (4K x 2K) , LPCM 2 channel

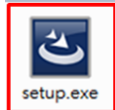
## EDID Operation:

1. By Pass Mode: Rotary switch turn to 0, connect source and monitor, the DDC will connect directly.
2. Manual Learning EDID Mode: Rotary switch turn to 1~3:
  - Press SET button 3 seconds to learn and write the EDID
  - Press SET button 0.5 second to select learned EDID
3. Default Mode: Rotary switch turn to 4~F, press SET button 0.5 second to select default EDID.

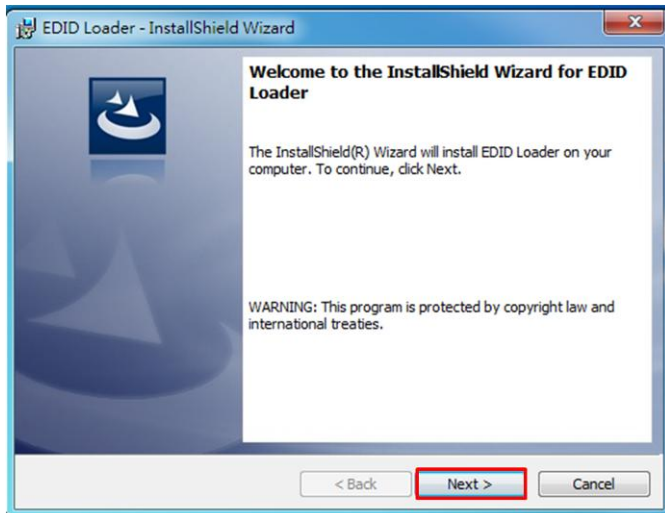
## Caution:

1. When learning EDID by manual: If EDID failed, the resolution will back to default at 720@60Hz resolution.

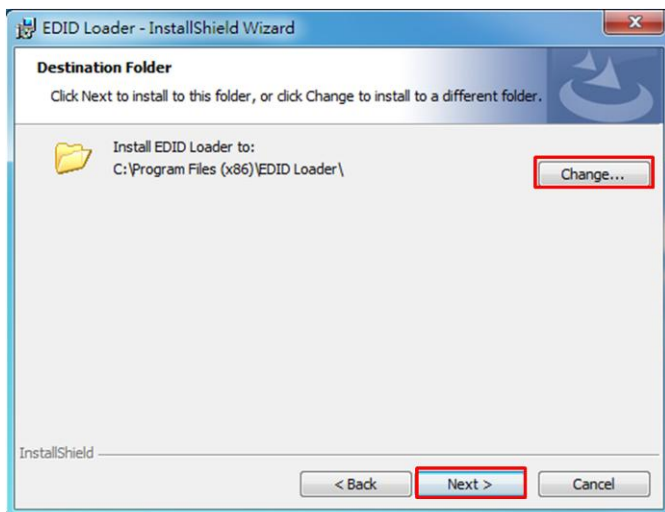
## EDID Loader installation:



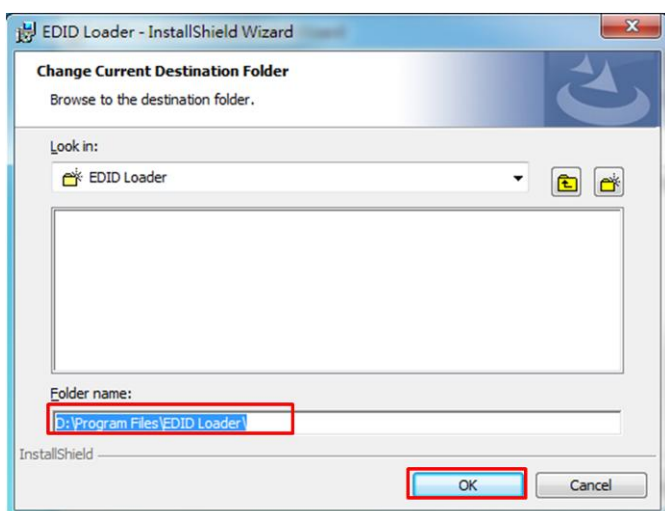
Double Click Setup file in CD path "EDID Loader" to install



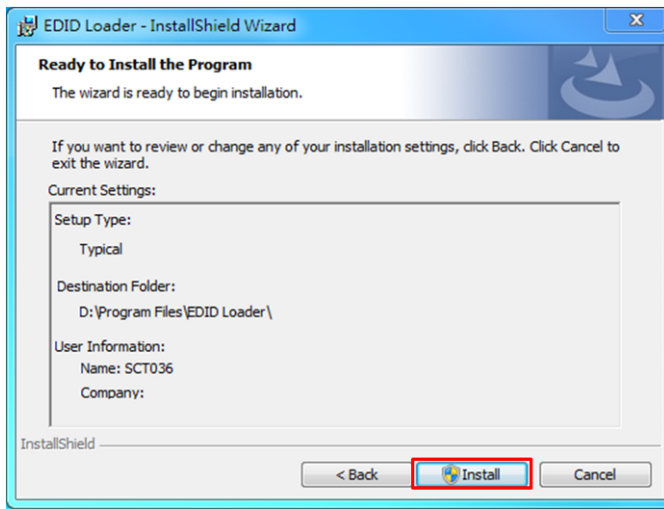
Click 「Next」 to next step



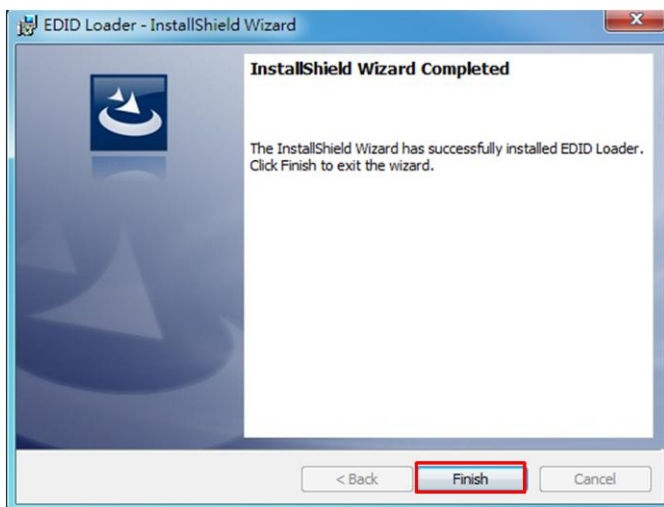
Default path is "C:\Program files (x86)\EDID Loader\", To change the installation path, please click 「Change...」, Click 「Next」 button to next step



If click 「Change...」 icon it will show up the modified window  
After modified the path, click 「OK」 to back, click 「Next」 to next step.



Click 「Install」 to start installation



After installation, click 「Finish」 to complete the installation



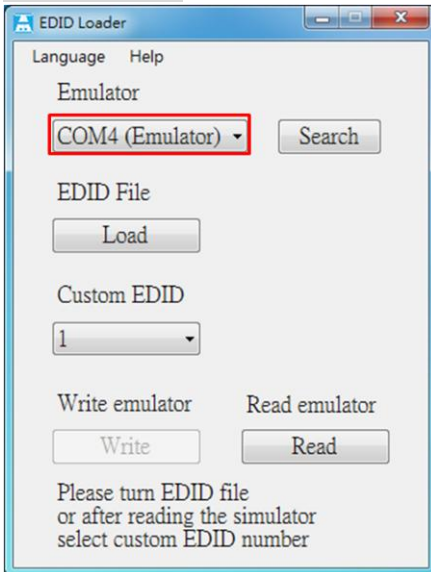
It will show “EDID Loader” icon on desktop, click the icon to run the program

## EDID Loader Instruction:



Click shortcut of EDID Loader to enter the program

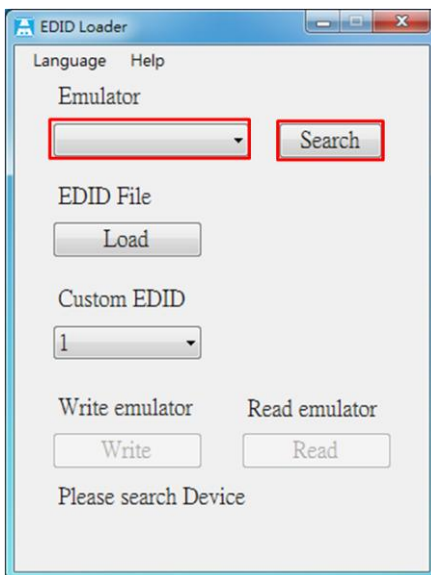
### Write EDID:



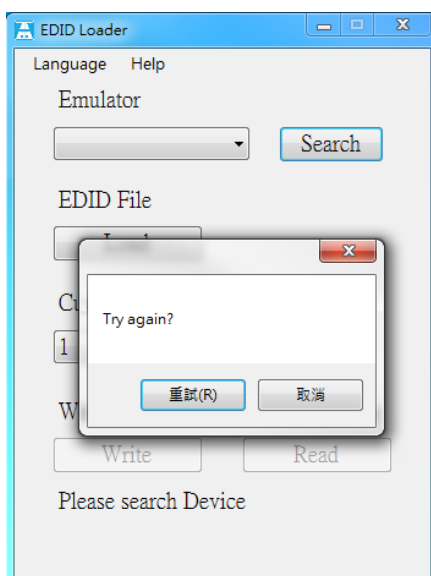
In main screen you will see the 「COM4 (Emulator)」 if the emulator have been connected with PC and installed driver properly

\*If it shows (Matrix) please pull down and select (Emulator)

\*「TCP/IP」in the pull down menu is for other products, not for emulator

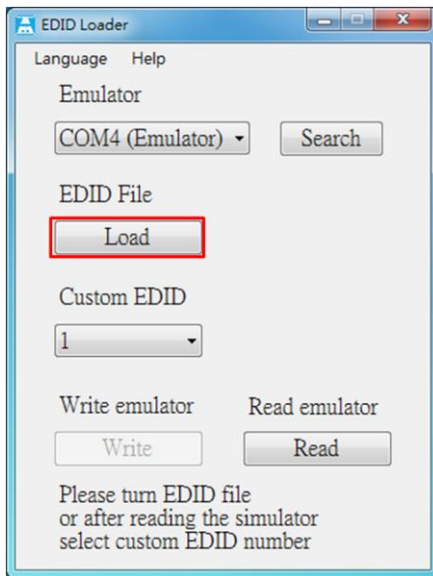


If the menu is blank please click 「Search」 to find the emulator

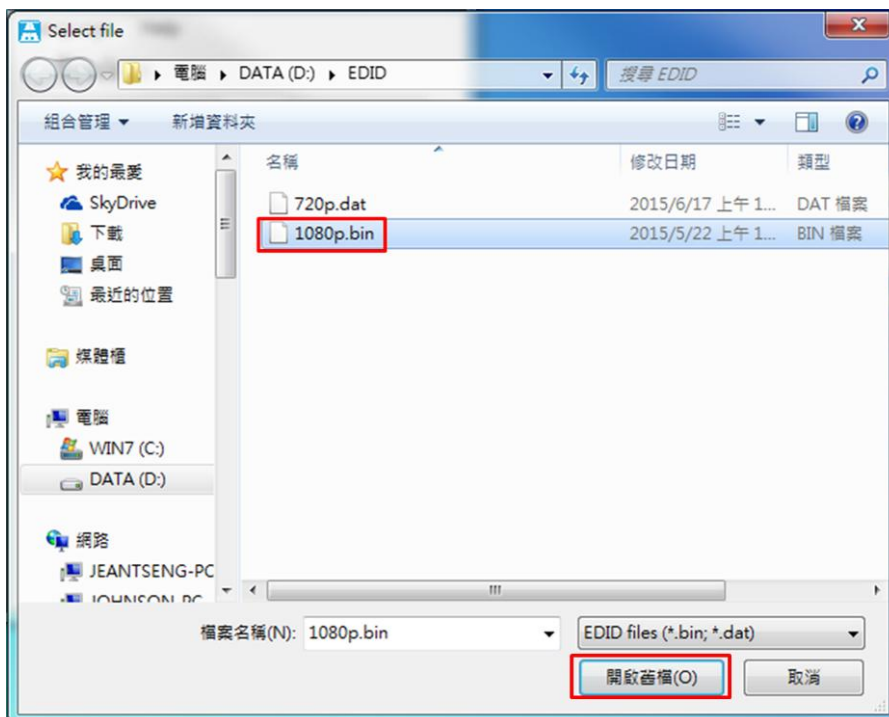


If still not find any devices it will show message "Try again?"

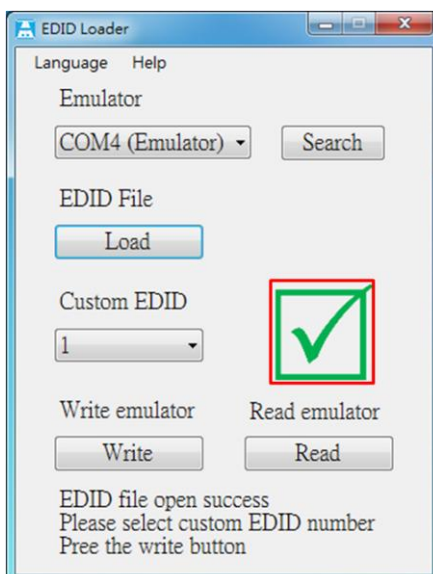
Please check the USB cable connection or use another USB port of PC then click 「Retry」



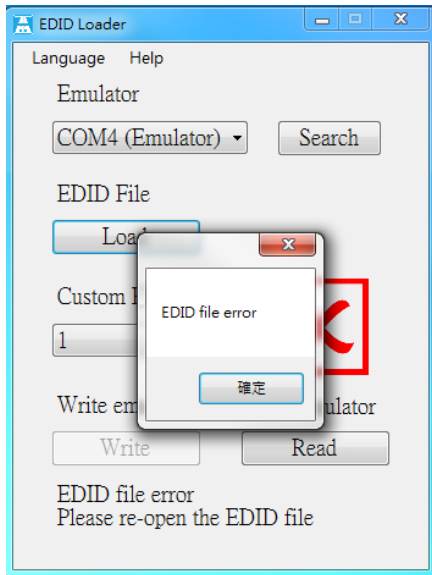
After emulation connected please click 「Load」 to load EDID file  
It will show select file windows as below



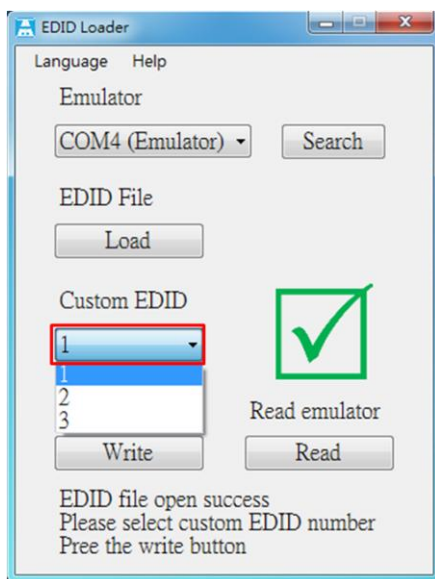
Select the EDID then click 「Open」  
\*Support format 「dat」 and 「bin」



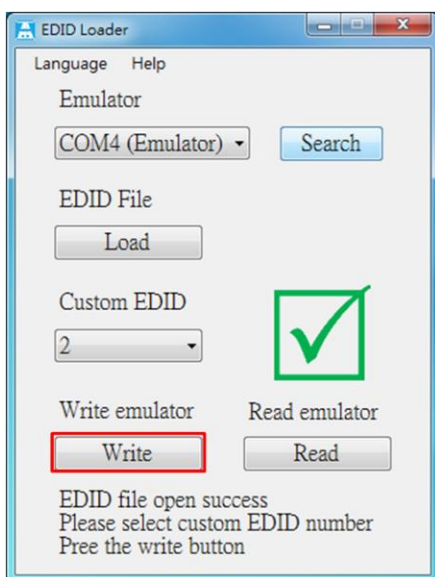
If the file is correct it will show a green checked icon



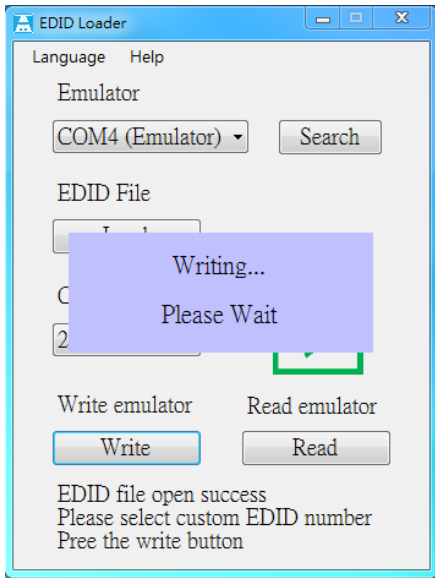
If the file is not correct format is will show a red X and message "EDID file error"



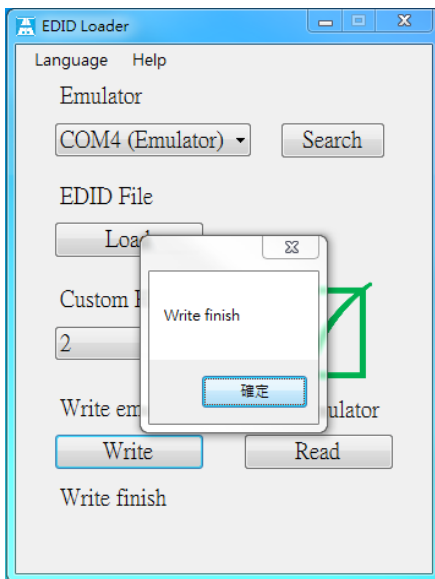
After open the EDID file pull down "Custom EDID" to select the bank 1~3 of EDID



Click 「Write」 to process



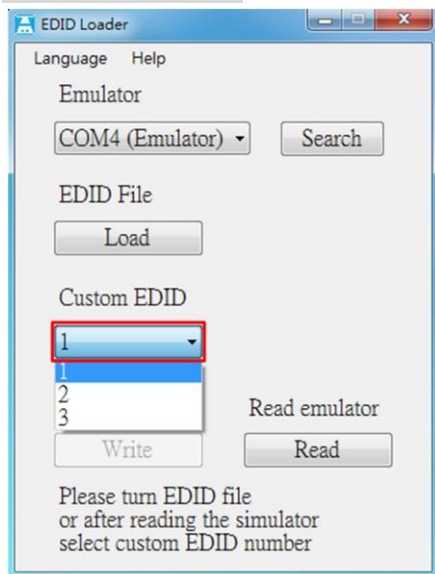
It will show message "Writing... Please Wait" when process



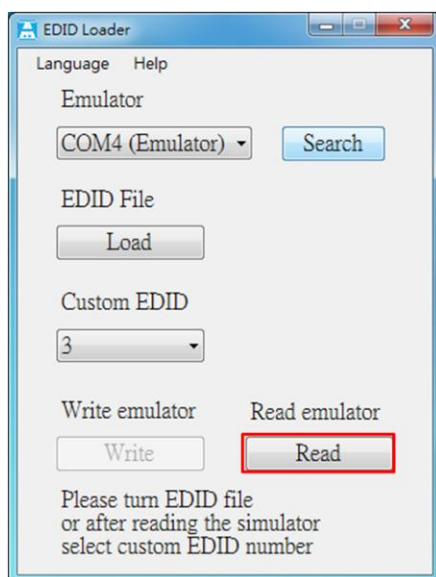
It will show message "Write finish" when finished



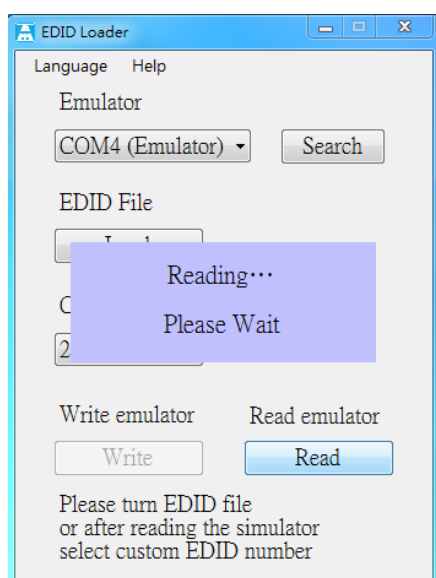
## Read EDID:



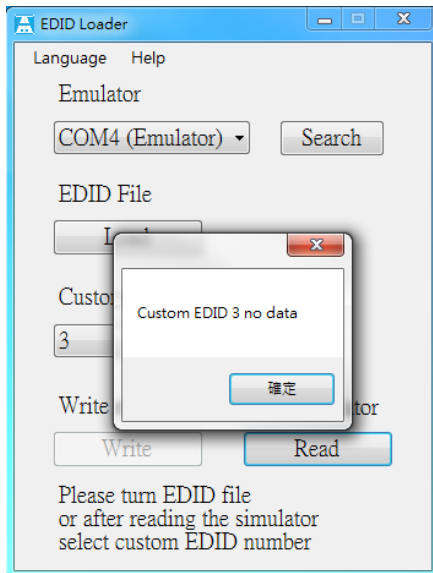
Pull down the "Custom EDID" to select the bank 1~3 of EDID



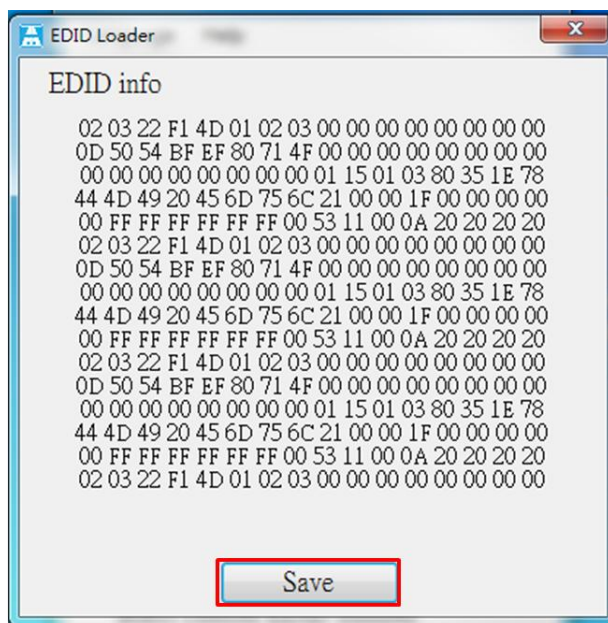
Click 「Read」



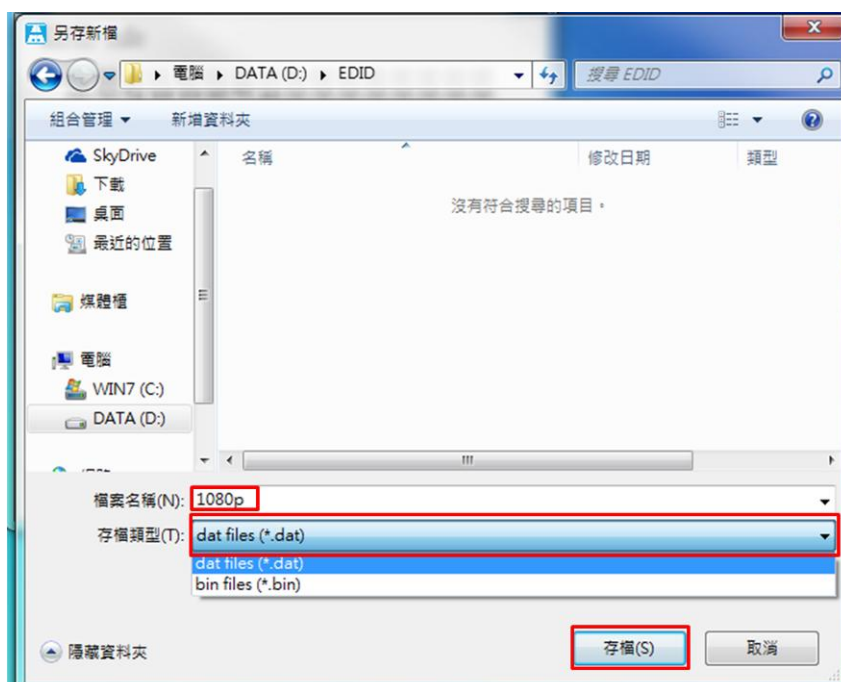
It will show message "Reading... Please Wait" when process



If there is no date in selected bank it will show message "Custom EDID x no data"

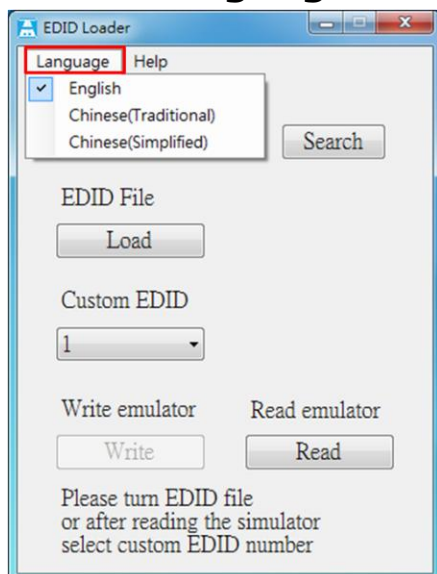


It will show EDID information after read, click 「Save」 to save to file  
It will show save file windows as below



Key in the file name and select the format then click 「Save」

## Select Language



Click 「Language」 to change English, Chinese Traditional and Chinese Simplified

## EE01H Package Include:

EE01H x 1 pcs

CD x 1 pcs

Micro USB to DC jack cable x 1 pcs

## Specification:

ITEM NO.	EE01H
Support Resolution	4K x 2K (3840 x 2160@24,25,30Hz or 4096 x 2160@24Hz)
LED	LED x 2 (Green, Blue)
Video Input /Output	HDMI x 2
EDID Writing	Micro USB x 1
EDID Switch	16 Rotary Switch x 1 (0~9 & A~F)
EDID Read/Write	Tact Switch x 1
Power Consumption	1.7 W ( Max)
Power Adapter	DC 5V / 1A
Temperature	Operation: 0 to 55℃, Storage: -20 TO 85℃, Humidity: up to 95%
Dimension mm	88 x85 x30 mm
Weight g	185 g

RoHS CE FCC

Rev. A